

MegaDome engineered fabric buildings are engineered for strength and long term performance. They conform to applicable building code, and are designed for the local climate conditions - particularly snow and wind loads. The building drawings are signed and sealed by a Professional Engineer qualified to certify the design and engineering pursuant to the Building Code.

The **National Building Code of Canada (NBCC)** governs all building construction in Canada. Most provinces have their own building codes, which are derivatives of the NBCC, with various adaptations to suit local conditions or requirements. In British Columbia the **BC Building Code** is applicable.

Each building is specifically engineered for that specific site. The snow and wind conditions to which it must perform are established by '**Appendix C**' published by the National Building Code of Canada (NBCC). An example is extracted from that, and is shown below. Vancouver, BC is highlighted, and the Design Data for that location is given as follows:

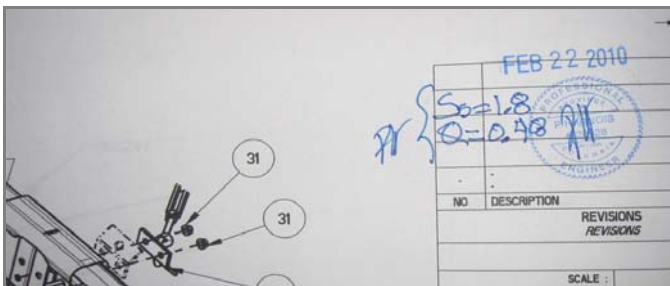
Ss (Snow load): 1.8 kPa
 Sr (Rain load): 0.2 kPa
 Q10 (10 yr winds) 0.36 kPa
 Q50 (50 yr winds) 0.48 kPa

The MegaDome is engineered to perform to those conditions. The same is confirmed to the Building Inspector, with submission of a Schedule B1 and B2, and **signed and sealed** construction drawings.

**Table C-2
 Design Data for Selected Locations in Canada**

Province and Location	Elev., m	Design Temperature				Degree-Days Below 18°C	15 Min. Rain, mm	One Day Rain, 1/50, mm	Ann. Rain, mm	Moist. Index	Ann. Tot. Pprn., mm	Driving Rain Wind Pressures, Pa, 1/5	Snow Load, kPa, 1/50		Hourly Wind Pressures, kPa		Seismic Data ⁽¹⁾				
		January		July 2.5%									S _s	S _r	1/10	1/50	S _s (0.2)	S _s (0.5)	S _s (1.0)	S _s (2.0)	PGA
		2.5% °C	1% °C	Dry °C	Wet °C																
British Columbia																					
Surrey (88 Ave & 156 St.)	90	-8	-10	29	20	3050	10	128	1500	1.58	1575	160	2.4	0.3	0.36	0.47	1.0	0.69	0.33	0.17	0.51
Vancouver	15	-7	-9	26	19	2925	10	112	1325	1.44	1400	160	1.8	0.2	0.36	0.48	0.94	0.64	0.33	0.17	0.46
Vancouver (Granville & 41 Ave)	120	-6	-8	28	20	2950	10	107	1325	1.44	1400	160	1.9	0.3	0.36	0.48	0.95	0.65	0.34	0.17	0.47
West Vancouver	45	-8	-10	28	19	3250	9	150	1600	1.69	1700	160	2.4	0.2	0.36	0.48	0.88	0.62	0.33	0.17	0.43
Vernon	405	-20	-23	33	20	3900	13	43	350	0.41	400	80	2.2	0.1	0.32	0.44	0.27	0.17	0.083	0.047	0.14
Victoria Region																					

The Design Data for a MegaDome's location is sourced from Appendix C, of the National Building Code of Canada



Construction drawings are signed and sealed by a BC P. Eng.; confirming the applicable design data.